

PŘEKLAD

dne: - 1 -03- 2017

PROVEDL/A
JANA PROKEŠOVÁ

SM/14/00109

VŠECHNY SVAŘOVACÍ SYMBOLY JE TŘEBA
CHÁPAT JAKO SYMETRICKÉ.

VÝROBNÍ IDENTIFIKAČNÍ ČÍSLO PODLE
PRAC. STANDARDU Č. 71, PODPOLOŽKA 5.1

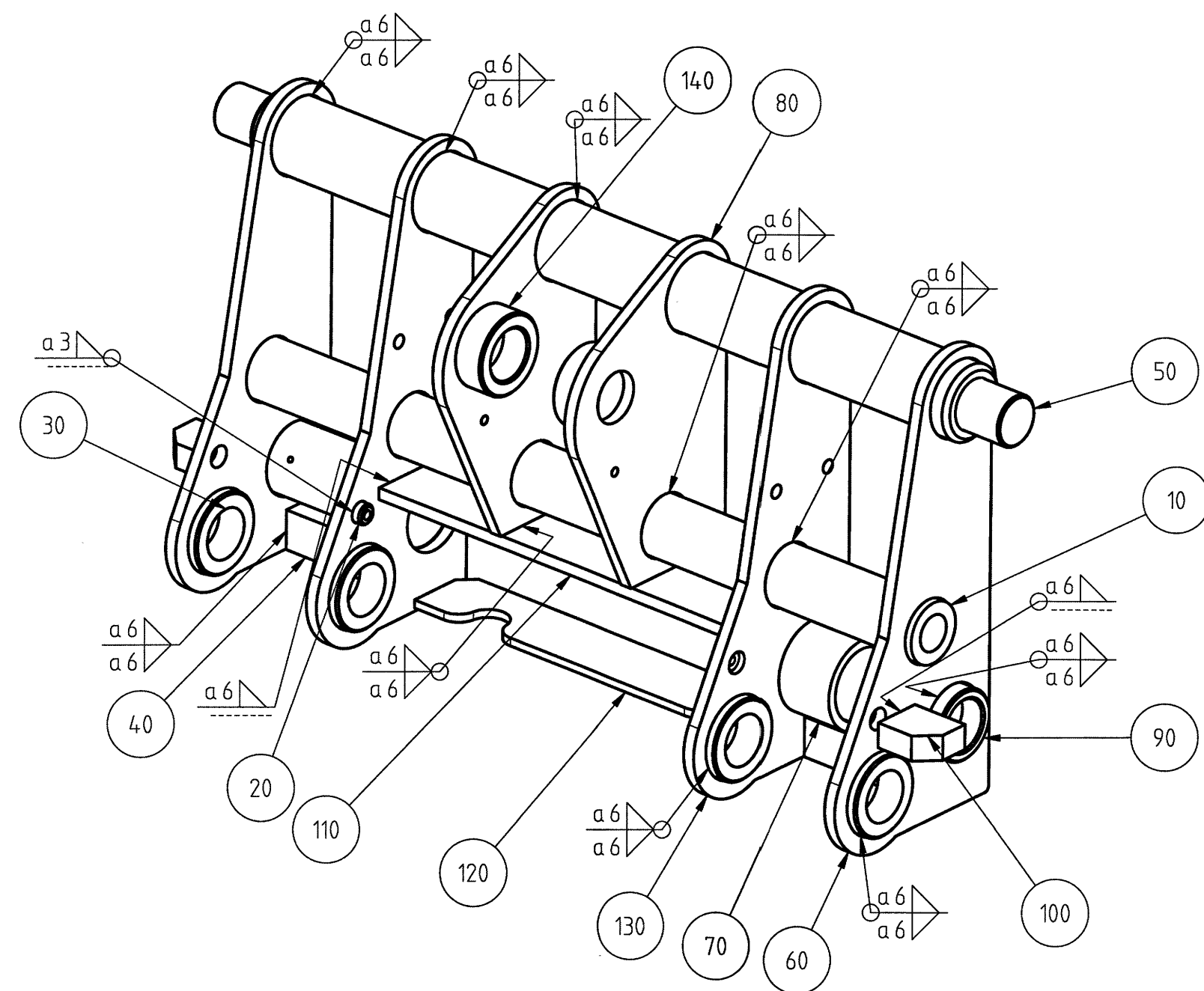
All welding information
must be seen as symmetrically

(S) Manufacturer's identification number
according to work-standard No.71 subitem 5.1

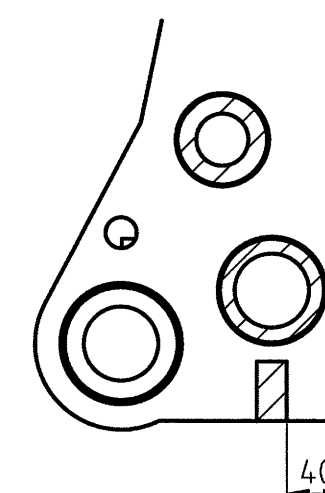
30 -03- 2017
ARCHIV

0

✓ (✓)



SECTION A-A



140	Anschweißbuchse 50x 80x 30mm	2000131334	00	BS03	2
130	HZ-Aufnahmelasche -Aufnehmer. Innen 935	2000131318	00	BS03	2
120	HZ-Verstärkung unten -Aufnehmerahmen 935	2000131272	00	BS03	1
110	HZ-Abdeckung Verrieg.zyl. Aufnahme HV935	2000131259	00	BS03	1
100	HZ-Knoten 50x60x25 mm	2000131222	00	BS03	2
90	Bolzenführungsbuchse-Verrieg.zyl. 935	2000131172	00	BS03	2
80	HZ-Aufnahmelasche Zugstange 935	2000131133	00	BS03	2
70	HZ-Rohr-Aufnehmerahmen 935	2000131111	00	BS03	2
60	HZ-Aufnahmelasche -Aufnehmer. Aussen 935	2000131018	00	BS03	2
50	HZ-Aufnahmewelle L=944 d=75 l=840 4070	2000131014	00	BS03	1
40	HZ-Ausrollanschlag -Schwinge 4070	2000129928	00	BS03	2
30	Anschweißbuchse 50x 80x 30mm	2000127355	00	BS03	4
20	Anschweißbröllchen m.Gew. M10	2000108235	00	BS01	2
10	HZ-Verstärkungsrohr -Aufnahme 935	2000107953	00	BS03	1

PC NO PART NAME DOC-NR DOC-VERMATERIAL QTY

This Drawing (version -003) has been converted into a new CAD format (Unigraphics NX7.5)
MENŠÍ ZMĚNY JSOU OZNÁČENY SYMBOLEM 0
Minor changes are marked by this symbol: 0

APPROVED FOR		Serienfrei (F4)	
Welding Construction according to "Werknorm 43"			
Surface Quality according to "Werknorm 40"			
Theor. Weight according to "KR001-2003"			
Material according to "Werknorm 51"			
Projection see: ISO 128	Scale	Surface Quality	ROH
1:2	A2	Standard Color	
Bend Tolerance see	DIN 6930 - 2 - m	Name	Date
Welding Tolerance see	DIN EN ISO 13920-BF	Count	Change
General Tolerance see	DIN ISO 2768 - mK	Name	Date
Surface Condition see	DIN ISO 1302	Theor. Weight [kg]	93.695
Laser-Cut Tolerance see	DIN 2310-5-IL up to 3mm / -K over 3mm	Name	Date
Copyright reserved to ISO 16016		Mat-Nr.	1000214240
		Doc-Nr.	2000117207
		Sheet	00